

FABRICATION

CEMERLANG BAJA
Manufacturing & Supply Division



Providing material support for development

- * BRC Fence panel
- * BRC Fence posts (Middle & Corner)
- * BRC Single Gate, Double, BRC Sliding Gate
- * Threaded/plain steel bars
- * Wire Mesh
- * Barbed wire
- * Plate, WF, CNP, UNP
- * Angle Steel
- * Steel pipe

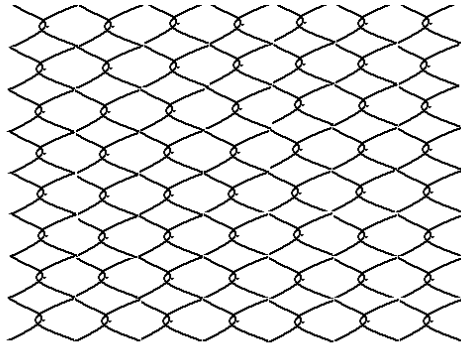


Manufacturing & Supplier

Jl. H. Samali no. 95D
Pejaten Barat, Pasar Minggu
Jakarta Selatan 12510
Tel. (021) 8221374/7981644
Facsimile: (021) 8221374
E-mail: sandy@cemerlangcitra.com

Workshop:
Jl. Raya Narogong KM.1 no. 13
Rawalumbu
Kota Bekasi

CEMERLANG BAJA

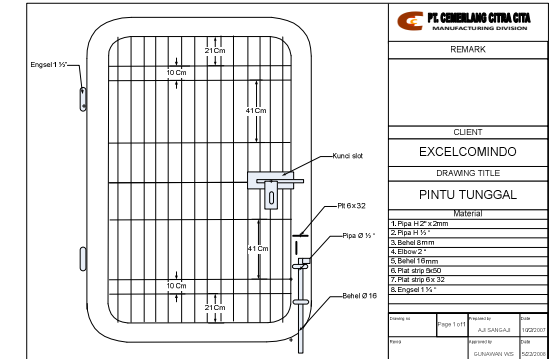


Chain Link for fence

Width = 20.000 mm
 Height = 2000 mm
 Cross Wire = 550 mm x 550 mm
 Diameter for wire = 3,3 mm
 Light Galvanized
 Basic Material = Galvanized wire

Single Gate

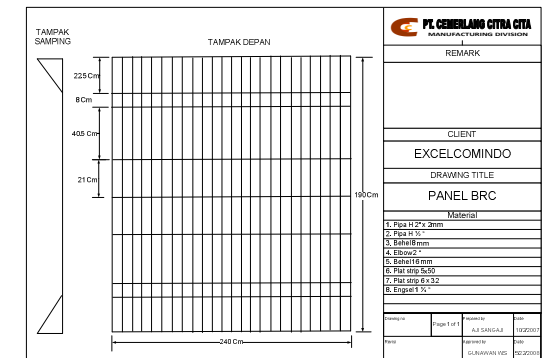
Width = 1575 mm
 Height = 1900 mm
 Material = pipe 2" x 2 mm
 = behel dia. 8 mm
 Hot Dip Galvanized



BRC Panel

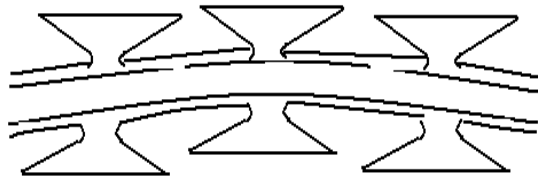
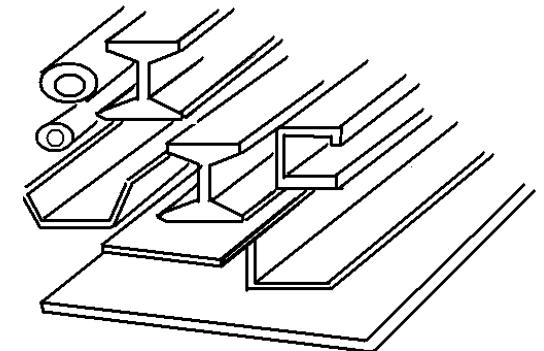
Width = 2400 mm
 Height = 1900 mm
 Cross Wire = 25
 Hot Dip Galvanized

Parts:
 Nuts bolts M8 x 80, Plate ring M8,
 U-Clip 8mm



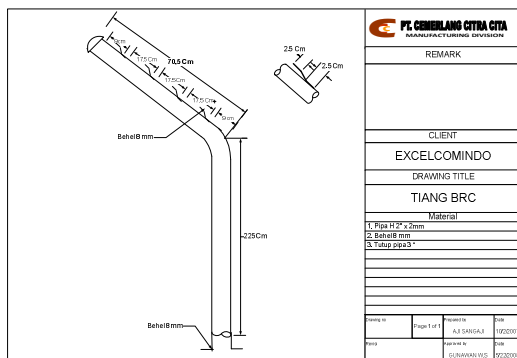
Raw Material

H-Beam
 Canal C
 WF
 Plate
 Steel bar
 Pipe
 Angle steel



Razor Wire

Length = 10.000mm
 Weight = 8 kg/roll
 Light Galvanize
 Material = Galvanized wire 2,5 mm
 Galvanized zinc



BRC post (Middle & Corner)

Length = 2750 mm
 Pipe Size = 2" x 2 mm, bending
 Angkur = behel dia. 8mm
 Wire clamp = behel dia. 8mm
 Hot Dip Galvanized